

FOR LEASE

# STONE CREEK PROFESSIONAL OFFICES

195, 275, 325 E. Hillcrest Drive

Thousand Oaks, CA 91360



## PROPERTY DESCRIPTION

AVAILABILITY:	From 1,027 up to 4,547 RSF
ASKING RATE:	\$1.95 per RSF
EXPENSE CALCS:	Base Year
TI ALLOWANCE:	Negotiable
LEASE TERM:	Negotiable
PARKING:	3.8/1000 U.S.F., surface



## CONTACT US

### MICHAEL SLATER

Senior Vice President  
+1 805 288 4710  
michael.slater@cbre.com  
Lic. 01050876

### TOM DWYER

Senior Vice President  
+1 805 288 4711  
tom.dwyer@cbre.com  
Lic. 01197938

### CAROLINE BIGELOW

Associate  
+1 805 288 4712  
caroline.bigelow@cbre.com  
Lic. 01177185

[www.cbre.com/ventura](http://www.cbre.com/ventura)

**CBRE**

# FOR LEASE STONE CREEK PROFESSIONAL OFFICES

195, 275, 325  
E. HILLCREST DRIVE  
Thousand Oaks, CA



## PROPERTY FEATURES

- + Highly efficient building
- + Close proximity to retail/restaurants
- + Beautiful common areas
- + Excellent freeway access
- + Garden campus environment
- + Common area conference room
- + TWC Fiber at the project

## CURRENT AVAILABILITY

BUILDING	SUITE #	SF	RATE	AVAILABLE
275	#145	2,917 RSF	\$1.95 FSG	Now
275	#150	3,160 RSF	\$1.95 FSG	Now
275	#205	1,027 RSF	\$1.95 FSG	30 days
325	#122	1,125 RSF	\$1.95 FSG	Now
325	#140	4,547 RSF	\$1.95 FSG	December 2018
325	#205	2,279 RSF	\$1.95 FSG	Now

© 2018 CBRE, Inc. All rights reserved. This information has been obtained from sources believed reliable, but has not been verified for accuracy or completeness. You should conduct a careful, independent investigation of the property and verify all information. Any reliance on this information is solely at your own risk.

[www.cbre.com/ventura](http://www.cbre.com/ventura)

**CBRE**

FOR LEASE  
**STONE CREEK PROFESSIONAL OFFICES**

195, 275, 325  
**E. HILLCREST DRIVE**  
Thousand Oaks, CA



275 E. Hillcrest Dr.  
First Floor



[www.cbre.com/ventura](http://www.cbre.com/ventura)

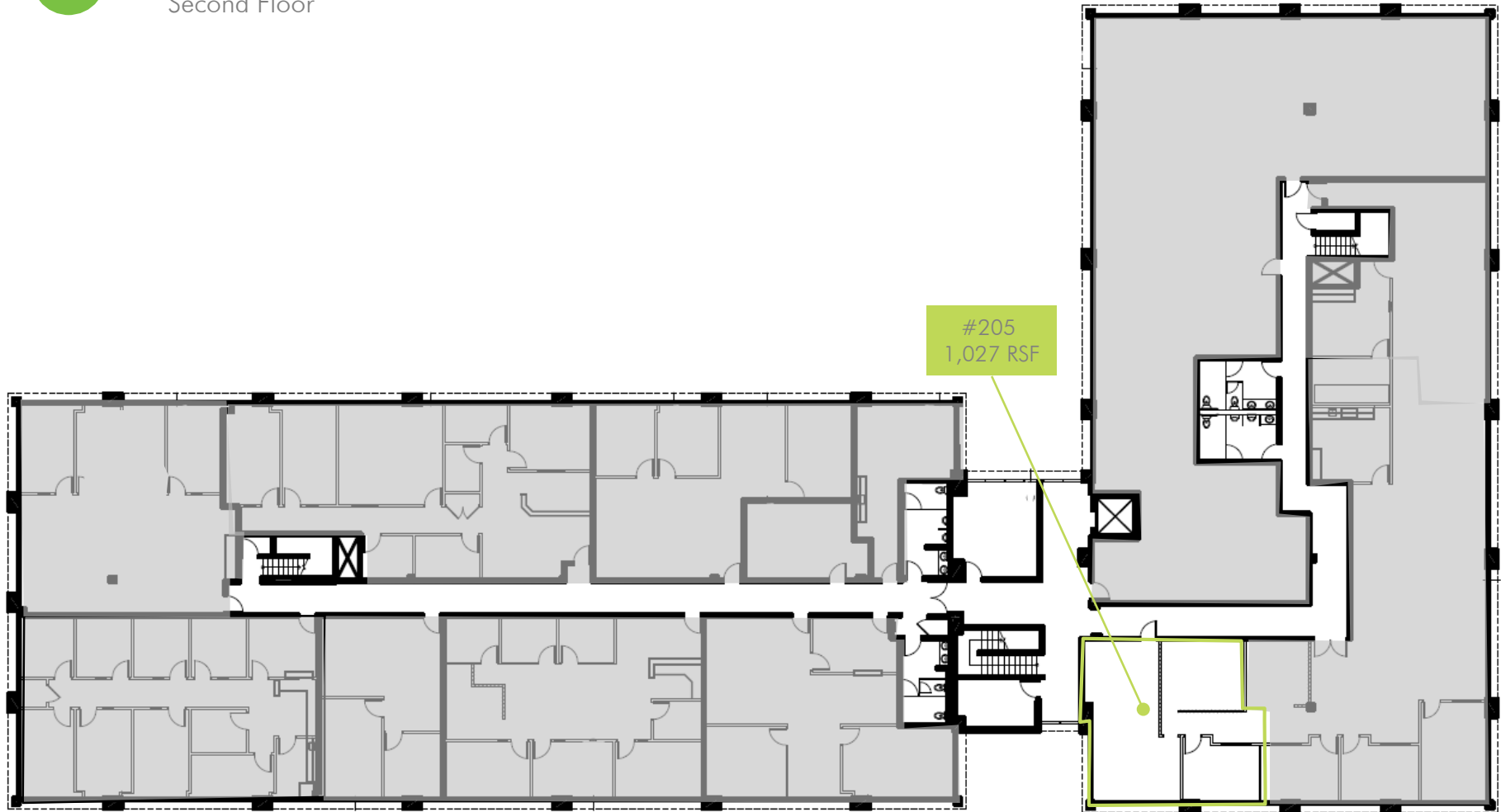
**CBRE**

FOR LEASE  
**STONE CREEK PROFESSIONAL OFFICES**

195, 275, 325  
**E. HILLCREST DRIVE**  
Thousand Oaks, CA



275 E. Hillcrest Dr.  
Second Floor



[www.cbre.com/ventura](http://www.cbre.com/ventura)

**CBRE**

FOR LEASE  
**STONE CREEK PROFESSIONAL OFFICES**

195,275,325  
**E. HILLCREST DRIVE**  
Thousand Oaks, CA



325 E. Hillcrest Dr.  
First Floor

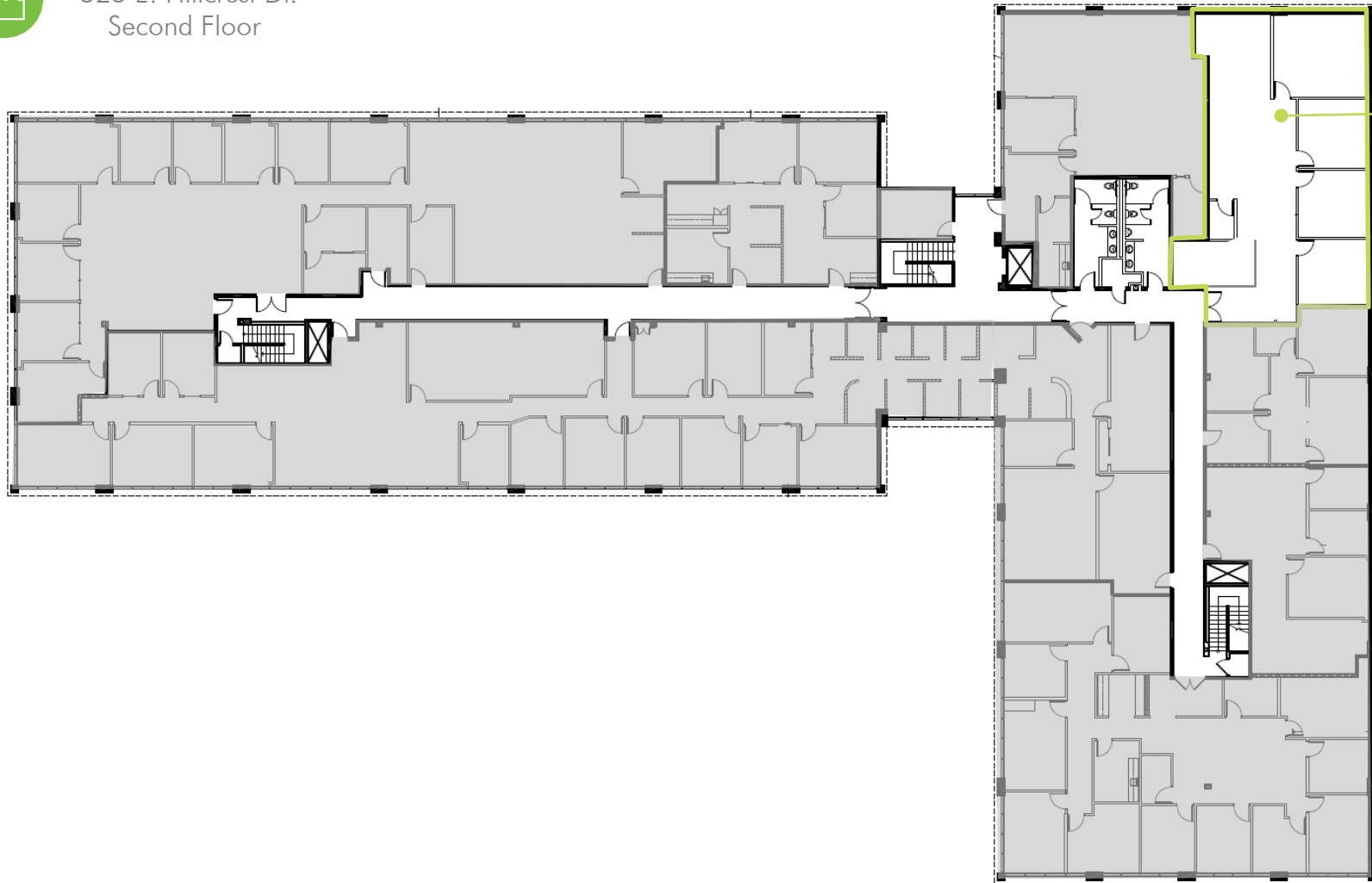


FOR LEASE  
**STONE CREEK PROFESSIONAL OFFICES**

195, 275, 325  
**E. HILLCREST DRIVE**  
Thousand Oaks, CA



325 E. Hillcrest Dr.  
Second Floor



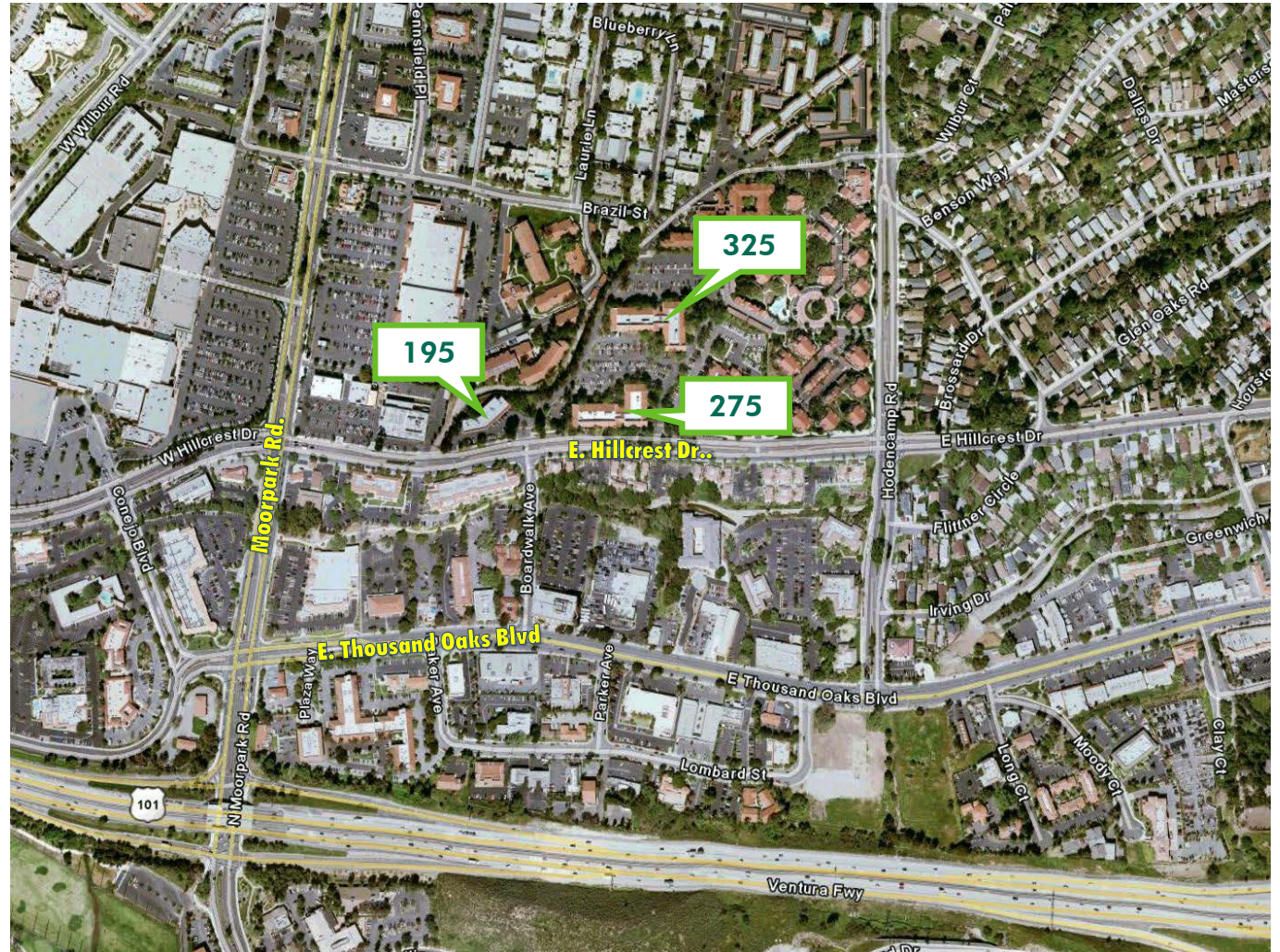
#205  
2,279 RSF

# FOR LEASE STONE CREEK PROFESSIONAL OFFICES

195, 275, 325  
E. HILLCREST DRIVE  
Thousand Oaks, CA



AERIAL



[www.cbre.com/ventura](http://www.cbre.com/ventura)

CBRE